

Clarke®

STRONG-ARM



200KG TRANSMISSION JACK

MODEL NO: CTJ200

PART NO: 7612607

OPERATION AND MAINTENANCE INSTRUCTIONS



ORIGINAL INSTRUCTIONS

GC0925

INTRODUCTION

Thank you for purchasing this CLARKE Transmission Jack, designed for use in the removal and installation of transmissions and differentials.

Before attempting to use this product, please read this manual thoroughly and follow the instructions carefully. In doing so you will ensure the safety of yourself and that of others around you, and you can look forward to your purchase giving you long and satisfactory service.

GUARANTEE

This product is guaranteed against faulty manufacture for a period of 12 months from the date of purchase. Please keep your receipt which will be required as proof of purchase.

This guarantee is invalid if the product is found to have been abused or tampered with in any way, or not used for the purpose for which it was intended.

Faulty goods should be returned to their place of purchase, no product can be returned to us without prior permission.

This guarantee does not effect your statutory rights.

SPECIFICATION

Rated Load	200 kg
Min Height	185 mm
Max Height with head	600 mm
Base size	280 x 170 mm
Dimensions (L x W)	450 x 420 mm
Weight	18.5 kg

SAFETY PRECAUTIONS

1. **DO NOT** exceed the rated capacity of the jack.
2. **DO NOT** allow personnel to operate the jack unless they have read these safety precautions.
3. Ensure that the jack is in good working order. Have any damaged parts repaired or replaced immediately. Use genuine Clarke parts only. The use of unauthorised parts may be dangerous and will invalidate the guarantee.
4. **DO NOT** operate the jack if damaged.
5. Use the jack in a suitable, well lit work area.
6. Keep the work area clean and tidy and free from unrelated items.
7. Use the jack on level and solid ground, preferably concrete. Avoid soft/unmade ground as the jack may sink in.
8. Ensure the vehicle is securely and rigidly supported.
9. Check the transmission is centred on the jack saddle.
10. Ensure all non-essential persons keep a safe distance whilst the jack is in use.
11. Ensure there are no personnel or obstructions under the vehicle transmission before lowering.
12. **DO NOT** stand or work under the load until it secured by suitable means.
13. Ensure when lifting, that the jack and all parts of the load can be clearly seen.
14. **NEVER** climb on, or attempt to ride on the jack.
15. Use the jack for lifting transmissions only, **NOT** for supporting the weight of the vehicle.
16. Take care not to trap fingers in the moving parts of the jack.
17. Lower the load as much as possible before moving the jack. **DO NOT** transport loads in an elevated position.
18. Ensure that you can see the saddle and jacking point throughout the jacking operation in case there is any relative movement.
19. **NEVER** tamper with the product or modify it in any way, as this could prove to be dangerous and will invalidate the guarantee. Only use the product for the purpose for which it is intended.
20. Use appropriate safety equipment such as protective footwear when using this jack.
21. When replacing parts, use only those supplied by Clarke International. Refer to the parts list on page 9.

22. Ensure that the jack is properly maintained and that no corrosion is allowed to weaken any part of it.
23. If the jack has been subjected to an abnormal load it should be removed from service immediately and fully inspected by qualified personnel and passed as serviceable before being used again.
24. When not in use, store the jack, fully lowered, in a safe, dry, childproof area.

IMPORTANT: ALWAYS ensure that the centre of gravity of the load, is centred about the head section, before taking the full weight.

LIFTING OPERATIONS AND LIFTING EQUIPMENT

Regulations 1998

This jack, depending on use, may fall within the scope of LOLER. It is the owner's responsibility to determine whether or not it does and, if so, to comply with any applicable requirements in LOLER, for having the jack thoroughly examined.

CONTENTS

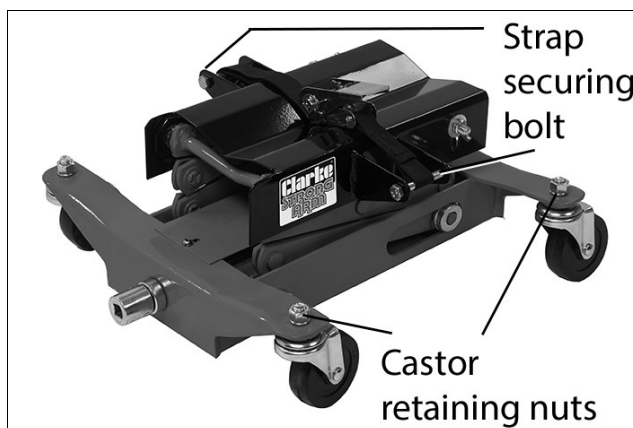
Unpack the components on a clean flat area of hard standing and ensure that all parts are present as follows:

- Transmission jack
- Castors with brakes (4)
- Fixings pack (washers & nuts)
- Retaining ratchet strap

Visually inspect all components to ensure that no damage was suffered in transit. Any damage should be reported to your CLARKE dealer immediately.

ASSEMBLY

1. Using a 19mm wrench, fit the castors to the base of the jack using the nuts and washers supplied.
2. Connect the ratchet strap to the jack, passing the securing bolts through the brackets at either side.
3. The webbing strap will need to be passed through the ratchet spool according to the size of the gearbox being handled.
4. Position the jack on its castors and ensure it is on firm level ground before use.



OPERATING INSTRUCTIONS



WARNING: BEFORE LIFTING, ENSURE THE SAFETY PRECAUTIONS ARE STRICTLY FOLLOWED. NO RESPONSIBILITY CAN BE ACCEPTED FOR INCORRECT USE OF THE JACK

1. Ensure the vehicle is in a safe state as mentioned in the safety precautions, ensuring the ground on which the jack is to operate is level and solid.
2. Raise the vehicle to an appropriate height and secure it on suitable supports (not supplied).
3. Position the jack saddle under the vehicle transmission.
4. Loosen the saddle tilt adjustment screws and open the strap using the ratchet .
5. Use a 1/2" square drive (ideally with a ratchet) to rotate the drive socket clockwise to extend the lifting components until the saddle contacts the transmission casing.
 - Allow the saddle to tilt as appropriate to seat itself firmly beneath the load.
6. Firmly tighten the saddle tilt adjustment screws to secure the saddle at the optimum angle.



Ensure the centre of gravity of the load is completely centred about the saddle before the full load is taken and secure the load with the ratchet strap if necessary.

With the load fully secured, turn the drive socket SLOWLY anticlockwise to lower the jack and load.



WARNING: ALWAYS LOWER IN A SLOW AND CONTROLLED MANNER AND THAT THERE ARE NO OBSTRUCTIONS IN THE PATH OF THE DESCENDING LOAD.

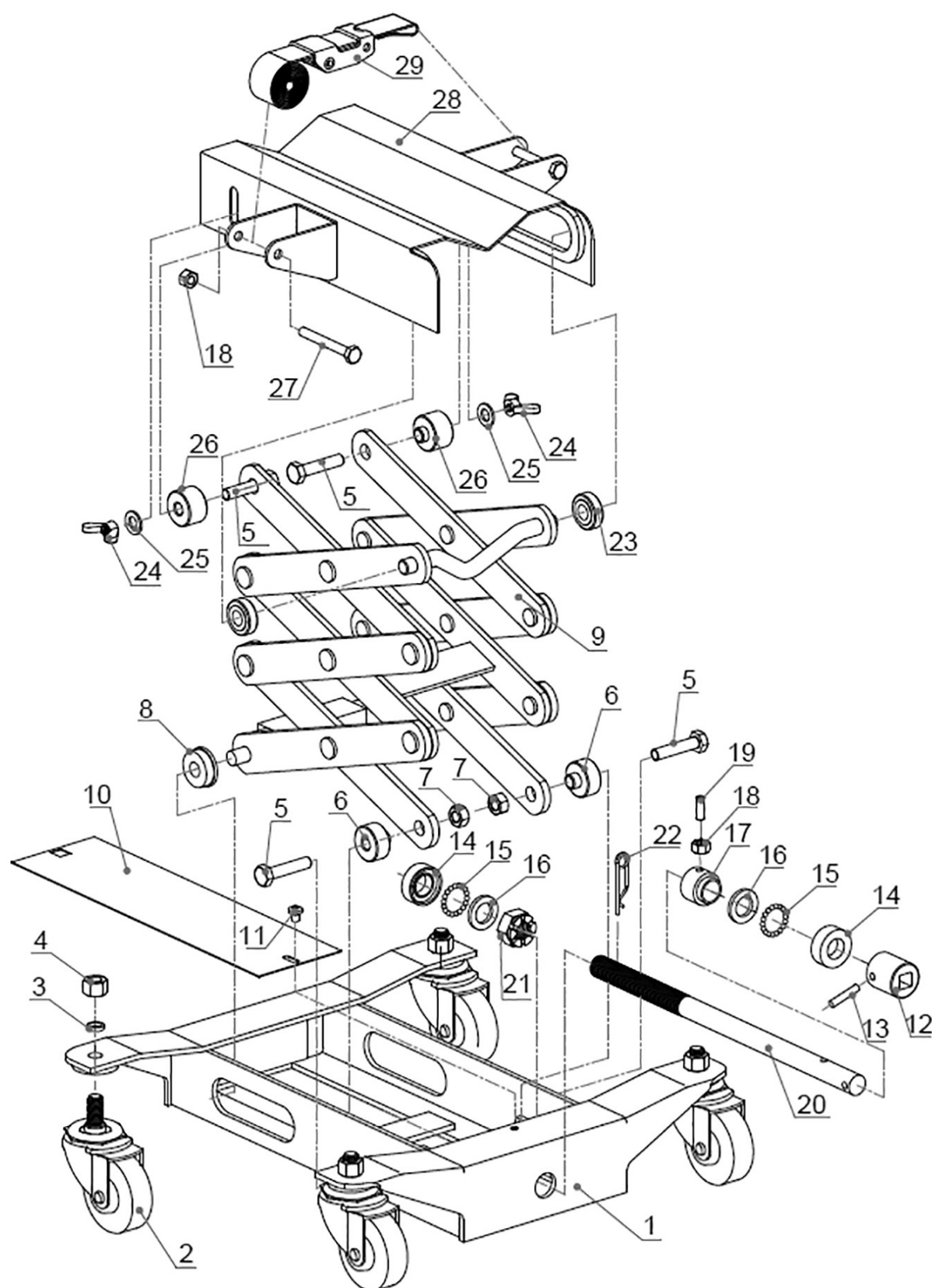
WARNING: TAKE CARE NOT TO TRAP FINGERS IN THE MOVING PARTS OF THE JACK.

CARE & MAINTENANCE

IMPORTANT: Only fully qualified personnel should attempt any repairs.

1. **ALWAYS** visually inspect the jack before use, to ensure that all parts are correctly locate and secure. Check for damage or worn parts and check the castors for damage. **DO NOT** use the jack unless it is perfectly serviceable.
2. The jack should be fully inspected periodically as follows:
 - Check for cracks and deformation of components.
 - Check castors to ensure they move freely without undue wear to their bores and that the wheels are not cracked or damaged.
 - Remove any rust and repaint to prevent further corrosion.
 - Ensure that all decals and warning notices are in place and legible.
3. **DO NOT** leave the jack in the open, exposed to the elements. Keep under cover when not in use.

COMPONENT PARTS



COMPONENT PARTS

No	Description
1	Base
2	Castor
3	Lock washer 12 dia
4	Nut M12
5	Bolt M10 x 45
6	Bush
7	Nut M10
8	Wheel
9	Frame
10	Cover plate
11	Bolt M6 x 12
12	Socket
13	Pin
14	Bearing
15	Steel ball 4 dia

No	Description
16	Bearing washer
17	Bush
18	Nut M8
19	Screw M8 x 18
20	Screwed rod
21	Adjusting nut
22	R-pin
23	Wheel
24	Wingnut M10
25	Washer 10 dia
26	Bush
27	Bolt M8 x 65
28	Saddle
29	Ratchet tie-down

DECLARATIONS OF CONFORMITY - UK



Hemnall Street, Epping, Essex, CM16 4LG

DECLARATION OF CONFORMITY

This is an important document and should be retained.

We hereby declare that this product(s) complies with the following legislation:

The Supply of Machinery (Safety) Regulations 2008

The following standards have been applied to the product(s):

EN 1494:2000/A1:2008

The technical documentation required to demonstrate that the product(s) meet(s) the requirement(s) of the aforementioned legislation has been compiled and is available for inspection by the relevant enforcement authorities.

The UKCA mark was first applied in: 2024

Product Description:	Transmission Jack
Model Number(s):	CTJ200
Serial/Batch Number:	Refer to product/packaging label
Date of Issue:	26/11/2024

Signed:

J.A Clarke

Director

DECLARATION OF CONFORMITY - CE



Clarke[®]
INTERNATIONAL

Fitzwilliam Hall, Fitzwilliam Place, Dublin 2

DECLARATION OF CONFORMITY

This is an important document and should be retained.

We hereby declare that this product(s) complies with the following legislation:

2006/42/EC

Machinery Directive

The following standards have been applied to the product(s):

EN 1494:2000/A1:2008

The technical documentation required to demonstrate that the product(s) meet(s) the requirement(s) of the aforementioned legislation has been compiled and is available for inspection by the relevant enforcement authorities.

The CE mark was first applied in: 2024

Product Description:	Transmission Jack
Model Number(s):	CTJ200
Serial/Batch Number:	Refer to product/packaging label
Date of Issue:	26/11/2024

Signed:

J.A Clarke

Director

A SELECTION FROM THE VAST RANGE OF

Clarke®

QUALITY PRODUCTS



AIR COMPRESSORS
From DIY to industrial, Plus air tools, spray guns and accessories.

GENERATORS
Prime duty or emergency standby for business, home and leisure.

POWER WASHERS
Hot and cold, electric and engine driven - we have what you need

WELDERS
Mig, Arc, Tig and Spot. From DIY to auto/industrial.

METALWORKING
Drills, grinders and saws for DIY and professional use.

WOODWORKING
Saws, sanders, lathes, mortisers and dust extraction.

HYDRAULICS
Cranes, body repair kits, transmission jacks for all types of workshop use.

WATER PUMPS
Submersible, electric and engine driven for DIY, agriculture and industry.

POWERTOOLS
Angle grinders, cordless drill sets, saws and sanders.

STARTERS/CHARGERS
All sizes for car and commercial use.



PARTS & SERVICE:

0208 988 7400

Parts Enquiries
Parts@clarkeinternational.com

Servicing & Technical Enquiries
Service@clarkeinternational.com

SALES: UK 01992 565333 or Export 00 44 (0)1992 565335

Clarke® INTERNATIONAL Hemnall Street, Epping, Essex CM16 4LG
www.clarkeinternational.com